



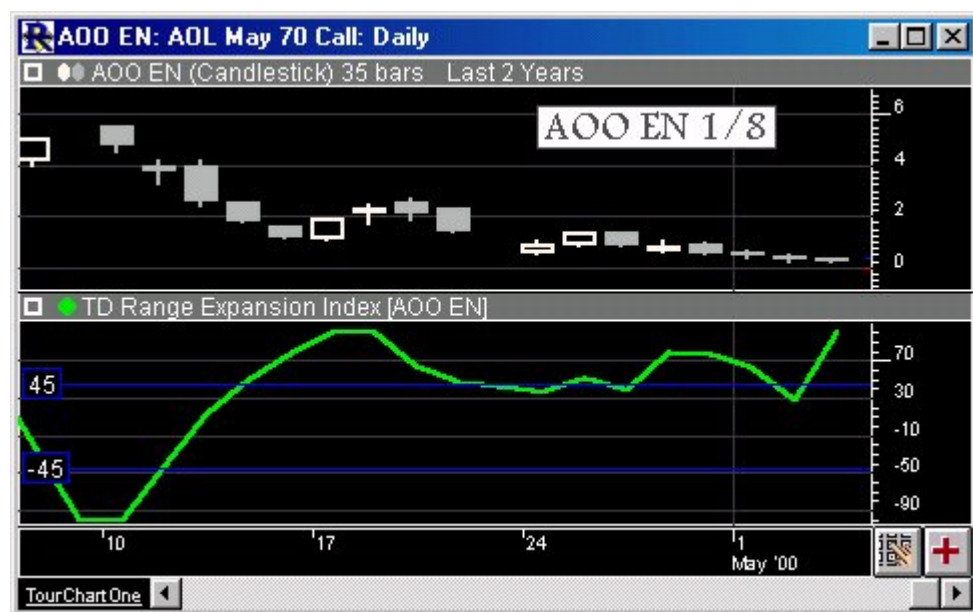
Published on Linn Software (<https://www.linnsoft.com>)

[Home](#) > Tom DeMark's Range Expansion Index

DeMark Range Expansion Index [1]

The DeMark Range Expansion Index is a market-timing oscillator described in DeMark on Day Trading Options, by T.R. DeMark and T.R. Demark, Jr., McGraw Hill, 1999. The oscillator is arithmetically calculated and is designed to overcome problems with exponentially calculated oscillators, like MACD. The TD REI oscillator typically produces values of -100 to +100 with 45 or higher indicating overbought conditions and -45 or lower indicating oversold. DeMark advises against trading in extreme overbought or oversold conditions indicated by six or more bars above or below the 45 thresholds. For more information on using TD REI the user is referred to the DeMark text.

Presentation




Above is a Daily Chart of an AOL May 70 Call (AOO EN). The bold green line in the lower window pane represents the TD REI line, as specified in the preferences below.

Preferences:

Period:

☒ Draw 45 % Lines

TD REI Color..... 

- **Period** - Period over which the TD REI values are summed.
- **Draw 45% Lines** - If this check box is checked, reference lines will be drawn at the 45% and -45% levels.
- **TD REI Color** -Color of the resulting TD REI line.

Formula Copy

```
IF( ( (HI>=L05 OR
HI>=L06) AND
(L0<=HI5 OR
L0<=HI6) ) OR (
(HI2>=CL7 OR
```

[Other](#) [2]

Source URL: <https://www.linnsoft.com/techind/demark-range-expansion-index#comment-0>

Links

[1] <https://www.linnsoft.com/techind/demark-range-expansion-index> [2] <https://www.linnsoft.com/indicator-tags/other>