

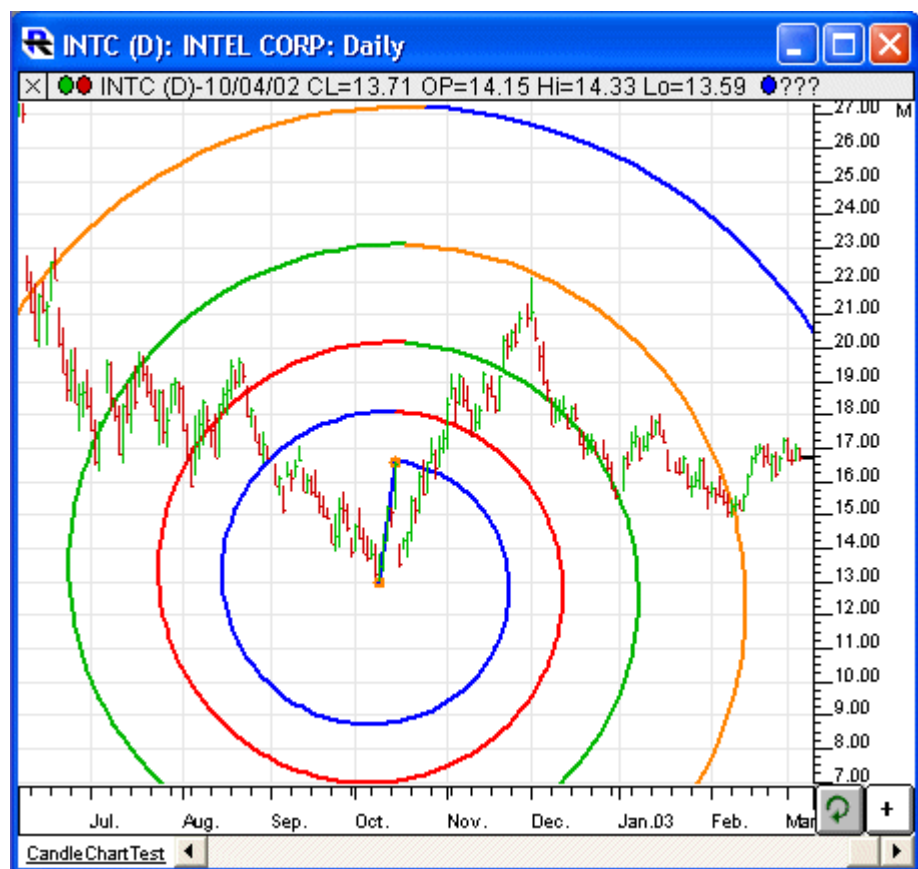


Spirals (Logarithmic Spirals)

The Spiral indicator (also known as the "Logarithmic Spiral") provides a link between price and time analysis, and can help in forecasting both price and time. Similar to indicators such as Fibonacci Retracements, Fibonacci Arcs, and Gann Angles, the Spirals indicator is based off a trendline which connects a significant high with a significant low. The spiral can be drawn in a clockwise and/or counter-clockwise direction originating from the endpoint of the trendline. To add the Spiral indicator to a chart, use the new Spirals button  on the charting toolbar. After clicking the spiral button , mouse down in the chart and drag a trendline connecting any two bars between which you'd like the trendline drawn. The spiral will then be automatically drawn off the resulting trendline.

Presentation



Above is a Daily Chart of Intel (INTC). The diagonal blue line represents a trendline between two [extreme](#)

prices, based on the begin and end date-times specified in the preferences below. In this example, the spirals are drawn in a clockwise direction from the endpoint of the trendline.

Preferences:

- **Begin** -Starting date/time of the trendline off which the spiral is based.
- **End** -Ending date/time of the trendline off which the spiral is based.
- **Rotations** -This controls how many complete rotations of the spiral will be drawn in the chart, beginning from the endpoint of the trendline.
- **Direction** -The spiral may be drawn in either a clockwise, and/or counterclockwise direction.
- **Cycle 1, 5, 9....** -This controls the color and line thickness of the 1st, 5th, 9th, 13th, etc...rotation of the spiral.
- **One Color** -If this checkbox is checked, all rotations (cycles) of the spiral will use the same color and line thickness (that of Cycle 1, 5, 9...).

Keyboard Adjustment

The keyboard can be used to move the Spiral trendline endpoints to the right and left. First, click on the chart. Then hit the tab key repeatedly until you notice your Spiral is selected. Then, press the right or left arrow keys on your keyboard to move the entire trendline right or left one bar. To move the trendline up

or down, press the up and down arrows on the keyboard. If you would like to move only the endpoint, then hold down the Ctrl key while pressing the right or left arrow keys. If you would like to move only the beginning point, then hold down the Shift key while pressing the right or left arrow keys. You can also quickly increase or decrease the line thickness of the spiral lines with a ctrl-up arrow or ctrl-down arrow.

[SPIRALS](#)

[DRAWING TOOL](#)

Source URL: <https://www.linnsoft.com/techind/spirals-logarithmic-spirals>