

Info Box [1]

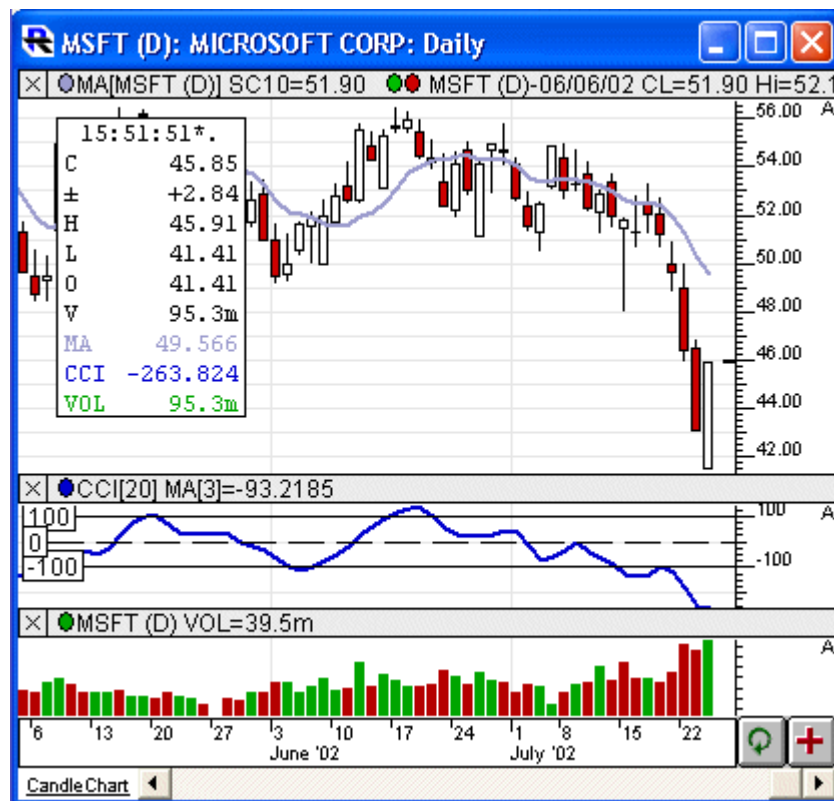
Info Box is a chart drawing tool that provides a tabular display of an instrument's market data and optionally, the values of technical indicators present in the chart window. User preferences are provided for background and text color, text font and size. The height of the info box is determined by the software based on the content requested. The width of the info box can be specified by the user in the preferences and can be adjusted using the keyboard. The market data displayed can be for:

- the current bar (the bar in progress)
- the last completed bar
- the bar where the mouse pointer hovers

Multiple info boxes can be added to the same or different panes within a chart. For example, you could have one info box showing the current values of an instrument, and another info box setup to show the values of all technical indicator in the chart based on the bar where the mouse is pointing. By default, info boxes are positioned in the upper left corner of the window pane. Info Boxes can be dragged and dropped from one pane to another using the mouse. The preferences for the info box can be accessed by right-clicking inside the box (control-clicking on Macintosh). An Info Box can be "selected" by clicking once inside the box. The border rectangle is drawn slightly thicker when the box is selected. When selected a variety of keyboard shortcuts are provided for moving the box's position inside the window pane, or expanding/contracting the width of the info box. When an Info Box is "Selected": Left arrow key moves the Info Box 1 pixel left. Right arrow key moves the Info Box 1 pixel right. Up arrow key moves the Info Box 1 pixel up. Down arrow key move the Info Box 1 pixel down. Hold down the arrow key for continuous movement of the box in the desired direction. If the Shift key is held down while using the up/down/left/right arrow keys, the movement increment is 5 pixels at a time for faster movement of the box in the desired direction. If the Ctrl key is held down (option key on Macintosh) the left and right arrow keys will contract and expand the width of the Info Box. Hold down the ctrl and arrow keys together for continuous width adjustments. Use the Ctrl key (option key on Macintosh) in conjunction with the up and down arrow keys to adjust the display content of the Info Box. There are three choices for market data content. Any or none of these can be setup for display: 1. Last Price and Change 2. Open, High, Low, Volume 3. Bid/Ask and Bid/Ask Sizes In addition, there are three choices for the kind of technical indicator content to be shown: 1. All Indicators in the Chart 2. Just the Indicators in the Pane containing the Info Box 3. No indicators This give rise to 24 combinations of content options. You can easily adjust the content settings by right-clicking on the Info Box to edit the preferences, or you can ctrl-up arrow or ctrl-down arrow to cycle through all of the content variations visually using the keyboard. The Info Box preferences window has a checkbox titled "Use Indicator Colors". When checked, the text of each technical indicator value shown in the Info Box is drawn in a color obtained from the preferences for the indicator. Thus if you have both red and green moving averages in the chart, then the values will be shown using those "line colors" so you can distinguish between them. To keep the Info Box as narrow as

possible, Investor/RT uses short abbreviations for each indicator (e.g. MA, CCI, MACD, etc.) so the color coding is recommended so you can equate the value with the appropriate indicator when there are two or more of the same indicator in the chart.

Presentation



Above is a daily candlestick chart with an Info Box in the upper window pane. The Info Box is setup to show all indicators, the CCI, the moving average, and the volume of the bar at the mouse pointer.

Preferences:

Show Data For
☐ Session ☐ Last Complete Bar
☒ Mouse Pointer ☐ Current Bar

Show
☐ Date, Time ☒ Op, Hi, Lo, Vol
☒ Last, Change ☐ Bid, Ask, Sizes
 No Indicators Pane #: Auto
☒ Use Indicators Own Colors for Text

Font: Courier New-11
 Box Width: 130
 Text Color:
 Background Colors: Up Dn
☐ Use Down Color for Negative Indicator Values

Text Label:
 Scope: This Chart, Any Instrument

Presets ▼ Help Cancel Apply OK

- **Font** -Font style and size of all text in the Info Box.
- **Text Color** -Color of the text and the Info Box border.
- **Background Color** -Color of the Info Box background.
- **Width** -Width, in pixels, of the Info Box.
- **Show Last Price and Change** -If this checkbox is checked, the closing price and the change will be shown in the box.
- **Show Op, Hi, Lo ,Vol** -If this checkbox is checked, the open, high, low, and volume will be displayed.
- **Show Bid/Ask/Sizes** -If this checkbox is checked, the bid and ask prices, in addition to the bid and ask sizes, will be shown.
- **Show Which Bar** -Determines what data is displayed in the Info Box. If "current bar" is selected, then the info box will always show the data representing the most current bar in the chart (regardless of mouse pointer position). If "Prior Bar" is selected, the Info Box will always show the data representing the next to last bar (last completed bar) in the chart (regardless of mouse pointer position). If "Mouse Pointer" is selected, the data shown will represent the bar on which the mouse pointer is positioned.

Keyboard Adjustment

When an Info Box is "Selected": Left arrow key moves the Info Box 1 pixel left. Right arrow key moves the Info Box 1 pixel right. Up arrow key moves the Info Box 1 pixel up. Down arrow key move the Info Box 1 pixel down. Hold down the arrow key for continuous movement of the box in the desired direction. If the Shift key is held down while using the up/down/left/right arrow keys, the movement increment is 5 pixels at a time for faster movement of the box in the desired direction. If the Ctrl key is held down (option key on Macintosh) the left and right arrow keys will contract and expand the width of the Info Box. Hold down the ctrl and arrow keys together for continuous width adjustments. Use the Ctrl key (option key on Macintosh) in conjunction with the up and down arrow keys to adjust the display content of the Info Box.

[INFOBOX](#) [2]

[CORE INDICATOR](#) [3]

[DRAWING TOOL](#) [4]

Source URL:<https://www.linnsoft.com/techind/info-box>

Links

[1] <https://www.linnsoft.com/techind/info-box> [2] <https://www.linnsoft.com/tags/infobox> [3]

<https://www.linnsoft.com/indicator-tags/core-indicator> [4] <https://www.linnsoft.com/indicator-tags/drawing-tool>